

Another Architecture N°64 October — November 2016

MARK

To the Point

Everything you
always wanted
to know about
architecture

EUR 3.995 GBR 14 CHE 30 CAD 29.50
USD 19.95 JPY 3,390 KRW 40,000



WHO
led architectural
photography?

WHY
do urbanites live in
tiny prefab boxes?

WHEN
did architects start
to adore banality?

WHERE
do all the graduate
architects vanish to?

WHAT
is an anarchist
house?

046

Mark 64

Cross Section

Historical Landing

Photo *Arp Karm*



Challenging the site given in the competition brief, DGT submitted a design for the Estonian National Museum that specified the nearby grounds of a former Soviet military base.

Text *Juliette Soulez*
Photos *Takuji Shimmura*

The new Estonian National Museum opens its doors on 1 October, more than a decade after French firm Dorell Ghotmeh Tane Architects won an international competition for its design in 2005. The building sits on a former landing strip that is part of Raadi, a large military base on the outskirts of Tartu that is being converted into a theme park by Estonian landscaper Kino Ou and Belgian landscape architect Bas Smets. The place is ideal for experimental architecture.

Entirely glazed – adorning the glass panels are screenprinted Estonian traditional motifs – the 355-m-long museum includes

6,400 m² of public space and 6,300 m² of exhibition space. Its concrete roof features a gradual incline, rising 3 m from the former runway at one end and reaching a height of 14 m at the other. The building has an impressive 40-m-long, gravity-defying cantilever. Beneath the cantilever, on the west side of the building, a monumental entrance conveys a sense of grandeur.

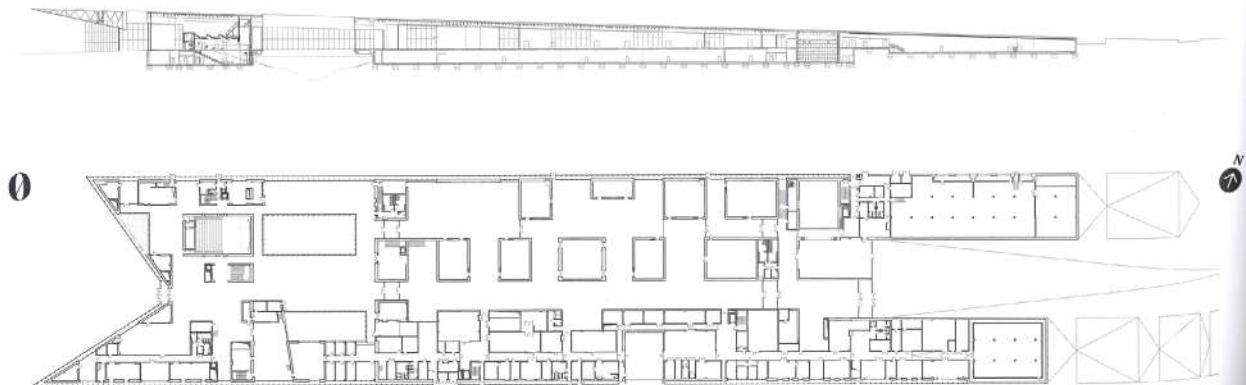
The addition of an entrance on the east side was intended to make a visit to the museum more dynamic and the building less hierarchical. The two entrances, which express the plurality of Estonia's national identity,

enable visitors to start their tour from galleries displaying the permanent collection or from the section that hosts temporary exhibitions. Exploiting the horizontality of the building to its fullest, the architects situated offices and an auditorium on the mezzanine level. Storage space is in the basement. Interestingly, the museum bridges a small lake that is visible from the west entrance hall. The view is a reminder of Estonia's Baltic coast, which has a length of 3,740 km and is marked by countless inlets and straits. The new museum is at once a poetic and political manifesto.

dgtarchitects.com



Long Section



Dorell Ghotmeh Tane Architects

Tartu — Estonia



The museum is help
heavily charged pro
Soviet military base